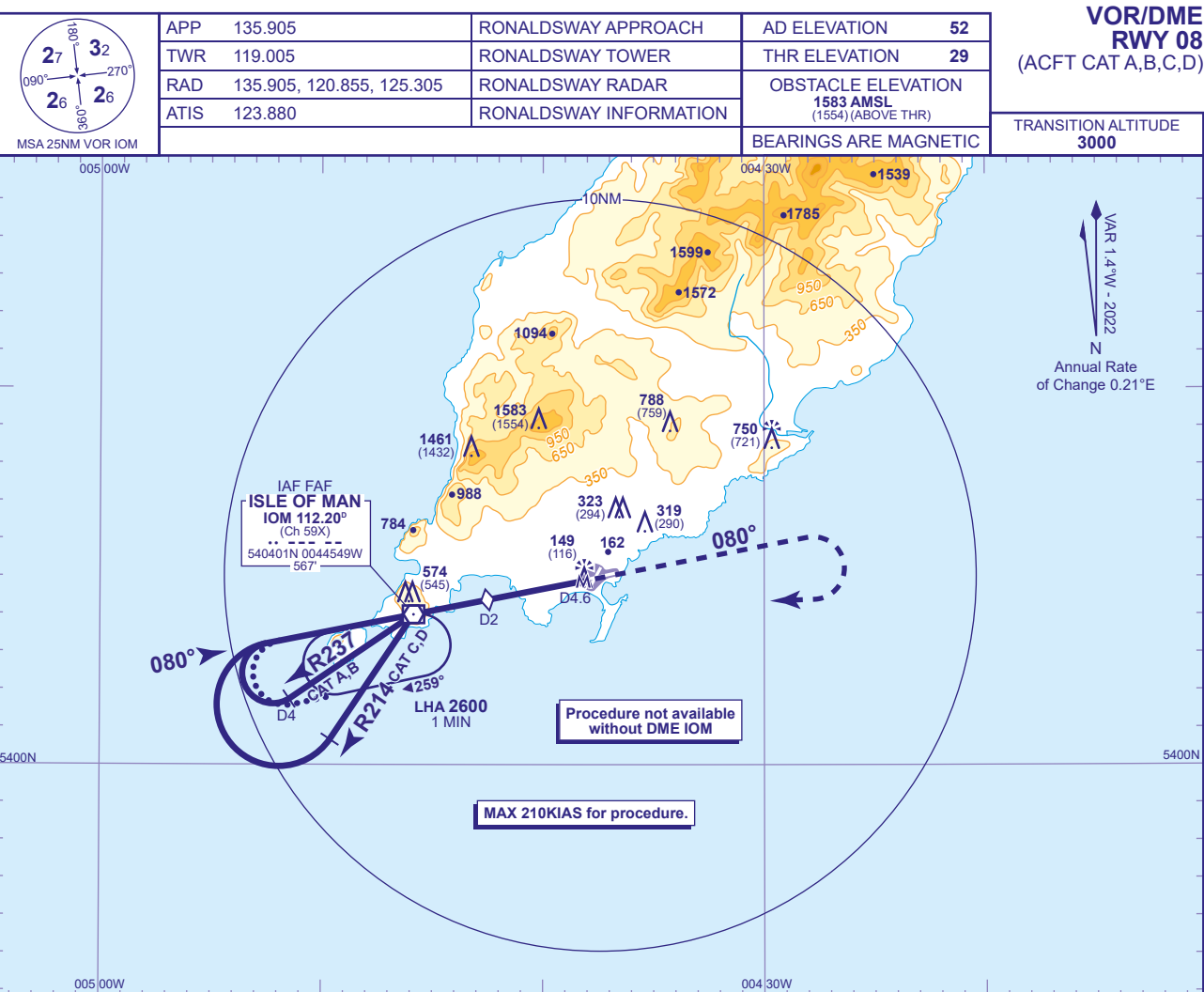
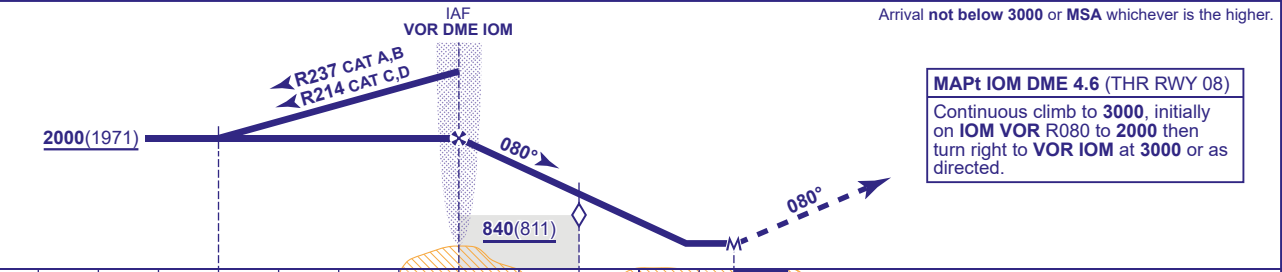


INSTRUMENT APPROACH CHART - ICAO

ISLE OF MAN  
VOR/DME  
RWY 08  
(ACFT CAT A,B,C,D)



RECOMMENDED PROFILE Gradient 6.81%, 414FT/NM				
DME IOM	IOM VOR	1	2 (SDF)	3
ALT(HGT)	2000(1971)	1590(1561)	1170(1141)	760(731)



Aircraft Category		A	B	C	D	Rate of descent	G/S KT	160	140	120	100	80
OCA (OCH)		Procedure	420(391)	420(391)	420(391)	420(391)	FT/MIN	1100	970	830	690	550
VM(C)OCA (OCH AAL)	Total Area		660(608)	760(708)	1980(1928)	1980(1928)						
	South of RWY 08/26		450(398)	550(498)	830(778)	990(938)						
	East of RWY 03/21		660(608)	670(618)	1190(1138)	1190(1138)						

**ALTERNATIVE PROCEDURE EXTENDED HOLDING PATTERN**  
From IOM VOR holding pattern, extend the outbound leg descending to 2000(1971). At IOM DME 4 turn right to intercept the FAT inbound. When established continue as for basic procedure.

**NOTE 1** Aircraft will normally be required to hold not lower than 3000.  
**2** FAT offset 1° from RWY 08 C/L.

**WARNING** This procedure is based upon the VOR/DME IOM, which is situated 4.6NM west of the aerodrome. All ranges are relative to the VOR/DME IOM and **DO NOT PROVIDE RANGES TO THRESHOLD**. Terrain and obstacles are present in the vicinity of VOR/DME IOM, **DO NOT DESCEND BELOW PROCEDURE MINIMUM ALT/HGT**.

**CHANGE (9/23):** VOR/DME IOM AERIAL ELEVATION.